

# MI SHPACHTENU

Volume 15, Issue 3

Tevet/Sh'vat/Adar 5773

## Kol Hakavod to our Award-Winning Beth Shalom

### Early Learning Center

On it's recent NAEYC Re-Accreditation and  
earning 4 out of 4 Keystone Stars



#### INSIDE THIS ISSUE

Carnegie Guitar Ensemble

page 3

J-JAM

page 4

Shabbat Alive

page 7

Purim Schedule

page 10

Early Learning Center

page 12

Shababababa

page 13

Superbowl Chili & Appetizers

page 15

Purim Booth Sponsor Form

page 18

Yahrzeit Plaque Order Form

page 19

Candelighting Times

page 21

January Calendar

page 26

February Calendar

page 27



## A MESSAGE FROM RABBI WERBOW

Each year, around this time, we start to gear up for the World Wide Wrap. We introduce the ritual objects of Tallit and Tefillin to our Bar/Bat Mitzvah students and we promote the Sunday morning programming that the Men's Club sponsors to encourage people to come on Super Bowl Sunday and put on Tefillin.

### Why Tefillin?

The Men's Club could have picked from a wide menu of options when it came to selecting a ritual to encourage our communities to participate. In some ways it really doesn't matter what was selected. It is much more like the Nike commercial that encouraged us to, "Just Do It." What is the "it"? We may not be 100% certain but what I do know is that doing something is the first step.

Staying with the idea of Tefillin, we can dig a bit deeper into the idea of increasing our observance of rituals. A ritual is an action we carry out that has some significance and meaning. One reason for people not observing the rituals of our tradition is that they either don't understand the meaning or they haven't made a personal connection to that meaning.

It is too easy to see Tefillin as foreign to our modern lives. Why would we want to take leather straps that are attached to boxes containing ancient texts and wrap them on our arms and heads? Let's look at some of the meaning behind the Tefillin.

In simplistic terms, the Tefillin are supposed to be a reminder of God, God's oneness and the obligation that is upon us to carry out what God expects of us. However we can appreciate them on a deeper level as well. We put the Tefillin on our arms and heads. Specifically, the arm Tefillin is near the heart while the head Tefillin is between the eyes. Arm, head, heart and eyes: There are so many

combinations of meaning we can derive from all of this. We can take from this that our arms (and by extension all the limbs of our body) are to carry out what our mind discerns to be the right thing to do. We could also understand that we are to connect our heart with our brain and thus bring together the emotions we feel and the intellect we possess.

On one hand we should just do the mitzvot because they are commanded but on the other hand we should find meaning in the rituals we are carrying out. Rabbi Louis Jacobs addresses this in his work, "The Relationship Between Religion and Ethics in Jewish Thought". He states:

"Although God commands them it is not implied that the command is the reason for their observance, so that if God had commanded man to steal or to murder this would have been the right thing to do. On the contrary, the commands are announced in such a way as to suggest that they are already fully comprehensible to man as the basis for living the ethical life. . . . Once God has commanded, however, the command itself is, of course, an additional reason for its observance." So, which comes first, the understanding that we are to be thoughtful in our actions or the command to put on Tefillin; our desire to connect our intellect with our emotions or the expectation that we follow an expectation of our tradition? In the end, it doesn't matter. Remember, "Just Do It!" Observe the Mitzvah. Have a personal connection to it first and then carry it out or, get in the habit of doing it and come to some understanding of what the ritual means to you. Either way, pick a ritual. It could be Tefillin or maybe you pick something else. Learn about the "hows" and "whys" of performing this particular ritual. Work to understand it personally and perform it over and over so you become comfortable with it. And, soon, you will own a new ritual that adds meaning to your life.

## Meet Our B'nai Mitzvah!



**Sophie Ilana Geskin**, daughter of Larisa Geskin, will celebrate becoming a Bat Mitzvah on Saturday, January 19, 2013. Sophie is the granddaughter of Rita Gurevich, the late Uri Karpel, Leah Geskin and the late Zalman Geskin. Sophie has two brothers, Albert and Jacob. Sophie attends Community Day School and enjoys playing piano and violin, tennis, traveling, skiing, gymnastics and art. Sophie's Mitzvah Project is the Samuel M. Goldston Teen Philanthropy Project and volunteering at the Veterinary Oncology Hospital.



**Rachel Zoe Holzer**, daughter of Sheila and David Holzer, will celebrate becoming a Bat Mitzvah on Saturday, February 2, 2013. Rachel is the granddaughter of Merle and Mitzi Levine and Alvin

and Lorraine Holzer and the late Eileen Holzer. Rachel has two sisters, Eileen and Samantha. Rachel attends Winchester Thurston School and enjoys basketball and hanging out with friends. Rachel's Mitzvah Project is the Bat Mitzvah Club and Friendship Circle.



**Samuel Caleb Himmel**, son of Dana and Alan Himmel, will celebrate becoming a Bar Mitzvah on Saturday, February 16, 2013. Sammy is the grandson of Marcia and Lee Himmel and the late Carol Hirsch. Sammy has a brother, Benjamin. Sammy attends Community Day School and enjoys basketball, cross country, EKC, stage crew and Friendship Circle. Sammy's Mitzvah Project is Project Linus and the Samuel M. Goldston Teen Philanthropy Project.

## A MESSAGE FROM CANTOR BEN

For liturgical music, we are at a crossroads between the synagogue of the 20<sup>th</sup> century—which could fail today because of a monolithic approach to music in worship—and a new model of synagogue. In moving into the next century, we have to find a balance between exploring and experiencing new forms of music in prayer while not losing the kernel of tradition. Thus, a dilemma arises when planning and leading services in finding the right balance between nostalgia and modernity.

If the author of Ecclesiastes was alive today, and also a Ba'al Tefillah, we might read:

*There is a time for percussion and a time for choir,*

*A time for Debbie Friedman and a time for Cantor Yosef Rosenblatt,*

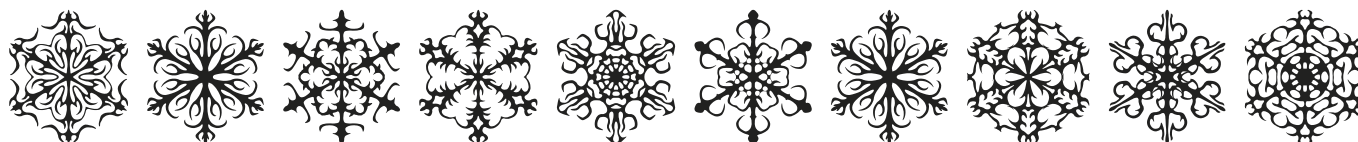
*A time for a mournful prayer and time to be uplifted.*

In services, there are times when Debbie Friedman's Mi Sheberach heals us, times when Kol Nidre brings us back to our ancestors and ancient times, and times when a choir can uplift us by encouraging us to sing or allowing us to close our eyes and be transported. We are comforted by singing our standard tune for Yismechu during Musaf, but we are also amiss if we don't learn Sephardi and Mizrahi traditions of worship. The key to providing a good worship experience is to learn together about our expansive musical tradition and to create services that allow us to talk with the divine.



Fondly,  
Cantor Ben

## JOIN US FOR A MUSICAL AFTERNOON



CARNEGIE MELLON CLASSICAL  
GUITAR ENSEMBLE

DIRECTED BY JAMES FERLA  
HELFANT CHAPEL.

FEBRUARY 17 AT 2:30 P.M.

\$ 5 SUGGESTED DONATION

*The Carnegie Mellon Guitar Ensemble is a classical guitar performance group open to music majors and non-majors by audition. Students present historically informed and creatively expressive performances of duos, trios, quartets, and larger ensemble music from every major style period. Four concerts a year are presented in one of the School of Music's performance spaces. Additional performances include community outreach programs at Pittsburgh area schools, retirement communities, and museums. The Guitar Ensemble has also presented pre-concert performances for the Guitar Society of Fine Arts and the Pittsburgh Chamber Music Society*

# J-JAM

**Sunday, February 10, 2013  
1pm-4pm**



5889 Forbes Ave, Pittsburgh PA 15217

**Adult musicians, singers, or spoken-word performers of all levels are invited to perform!**

Non-perishable food items or monetary donations  
given to The Squirrel Hill Food Pantry  
Hosted by Cantor Ben Rosner of Congregation Beth  
Shalom and British musician Joel Lindsey

Sign up in advance by emailing  
Cantor Ben at: [cantorben@aol.com](mailto:cantorben@aol.com)

**\*\*Attendees under 18 must be adult supervised\*\***

## **Free Entry**

Food and Beverages available for purchase  
(Kosher and VAAD certified)

BethShalom  
בית שולום

SQUIRREL HILL  
COMMUNITY FOOD PANTRY 

# DON'T LET FOOTBALL SEASON GO BY WITHOUT SHOWING YOUR STEELER PRIDE!



Steeler T-Shirts in Hebrew are BACK!

SIZES RANGE FROM INFANT ONESIE —ADULT XXL!

Proceeds benefit the Beth Shalom Youth Department

Onesies- \$12/one, \$20/two

Youth Size M— Adult XXL: \$15/1 shirt, \$25/2 shirts

Contact Carolyn to purchase: 412.421.2411

## THIS IS YOUR YEAR TO MAKE A DIFFERENCE BETH SHALOM MEN'S CLUB PRESENTS OUR ANNUAL SPORTS LUNCHEON



**For our Special Needs Friends  
Featuring local sports celebrities**

**SUNDAY, FEBRUARY 10TH  
12:00 P.M.**

**SAMUEL & MINNIE HYMAN BALLROOM  
PLEASE RESPOND BY FEBRUARY 1ST  
Become a Men's Club Angel:**



**Help Sponsor Our Special Needs Guests - \$118.00/table**

**NAME** \_\_\_\_\_

**PHONE** \_\_\_\_\_ **E-MAIL** \_\_\_\_\_

**Will you: (check if yes) \_\_\_\_\_ Volunteer? \_\_\_\_\_ Become an Angel and sponsor a table?**

*Please remit your donation to the Beth Shalom Men's Club. Thank You!*





## A MESSAGE FROM THE PRESIDENT:

In the spirit of "Courageous Conversations" I have participated in a number of discussions and meetings with leaders from other Jewish Agencies and other synagogues and temples. The presidents of synagogues from all the denominations have gathered together, on a regular basis, to learn from leading experts on a number of topics of mutual interest. The presidents have discussed collaboration in the Pittsburgh community and ways to enhance our respective congregations. We have studied national trends and are working together with Brandeis University to gather data which will reflect the state of affairs in our supplemental religious schools. We have learned we have far more in common than we imagined and a desire to collaborate.

Recently, I also participated in a series of meetings organized by the Agency for Jewish Learning and the Jewish Federation of Pittsburgh that addressed "Communal Supplementary Jewish Educational concerns for local stakeholders."

During one very energizing meeting, we explored the goals of Jewish Education in the greater Pittsburgh Jewish community. We came to agree on several goals, with one goal resonating with all of us: the need and desire to build and **sustain a vibrant Jewish community**. As we discussed our goals and priorities a number of stakeholders shared their own mission statements.

I was prompted to look at our own mission statement again. It sits on the desks in front of each board member when we have meetings. The statement, as it appears in our Constitution & Bylaws, is reprinted for you to read:

*The Congregation shall be a full service, egalitarian congregation dedicated to perpetuating and affirming Conservative Judaism by providing a complete range of religious, cultural, educational and social programs, and a cemetery, with the intent of strengthening the faith and nurturing the religious development of its members, including, without limitations, maintaining a place of public religious worship, according to the established usages and customs of Conservative Judaism and maintaining a religious school of instruction. The congregation shall endeavor to meet the Jewish health, educational, welfare, religious and other human needs locally, nationally, and in Israel.*

### Does this Mission hold true today?

What might you want to change or edit in this mission statement? As we work together over the coming months to explore our goals, our priorities and our financial state of affairs, we ought to keep the mission in full view. Each program we offer needs to be tied in with our mission. We ought to ask if such and such a program are mission critical and if so we will know we are on the right path.

The purpose of a Mission Statement calls for the organization to state the purpose of the organization, state the reason for the organization's existence and guide the actions of the organization, and be an expression of the organization's values and its principle beliefs. In short: what is the purpose? What is the business? What are the values?

We turn to you to be engaged in our meetings on sustainability. We ask for your involvement and your ideas. **Join us on Sunday, January 6 at 10:00 a.m. or on Monday, January 14 at 7:00 p.m. for the Forums on Sustainability.**

We are seeking your input on the role of Congregation Beth Shalom today and into the future. Here is your opportunity to enhance our mission statement, by rewriting it or editing it.

**Do we want to build a vibrant Jewish community? Or do we want to build a vibrant Conservative Jewish Community?** Do we want to be a full service congregation? Perhaps we want to be but are not able to be at this time? Perhaps we want to be full service but are willing to share some aspects of our operations. Do we want to be inclusive? If so, how do we convey this message? Do we want to state that we welcome people of diverse backgrounds and lifestyles?

Some of you like to volunteer and we are grateful. Some of you will attend meetings and forums and we will be grateful for your participation. Some of you like to read and write.

**Please take a few minutes or allocate some time and send along your recommendations** for Congregation Beth Shalom's mission statement. Please email me at: [slkirschner@gmail.com](mailto:slkirschner@gmail.com) This is your chance to speak up and share your ideas.

In order to create a sustainable future, we must work together as we build upon our foundation.

Stefi Kirschner

## Do You have ideas ON how WE can make OUR SHUL BETTER?

Please participate at our upcoming Sustainability Conversations

**SUNDAY, JANUARY 6TH @ 10:00 A.M.**

**MONDAY, JANUARY 14TH, 2012 @ 7:00 P.M.**

Facilitated by: Aviva Rosenberg, Kate Rothstein & Yael Silk

# SHABBAT ALIVE

*L'ayla U'ayla* - Higher and Higher

Let our voices rise together as we create a meaningful Kabbalat Shabbat evening with Cantor Ben, Rabbi Werbow, Rabbi Donni and the Beth Shalom Band to lift our Shabbat souls higher & higher!

## JANUARY 11 & FEBRUARY 8

**6:00pm** Kabbalat Shabbat Service for All in the Helfant Chapel

**7:00pm** Traditional Shabbat Meal for additional charge  
Catered by Creative Kosher

**DEADLINE FOR RESERVATIONS**  
**TUESDAY JANUARY 8**  
**TUESDAY FEBRUARY 5**

**Early Bird Pricing- Before:**

January 4/February 1  
\$12.50 for Adults & Kids Age 8+  
\$8.00 for Kids under 8  
Kids under 2 are FREE

**Standard Pricing- On or After:**

January 4/February 1  
\$15.00 for Adults & Kids Age 8+  
\$12.00 for Kids Ages 2-7  
Kids under 2 are FREE



Shabbat Alive is supported by the Betsy and Alan Kanarek Shabbat Alive Endowment.

Please complete the order form below and return the bottom portion with a check for the amount, or the completed credit card information.  
Your payment is your reservation.

**Shabbat Alive ☺ January 11 February 8**

Please RSVP to Judy at 412.421.2288 ext. 110

Please Circle which dates you will attend

# \_\_\_\_\_ Adults @ \$ \_\_\_\_\_ each = \$ \_\_\_\_\_

Attending both dates?

# \_\_\_\_\_ Total Attending

# \_\_\_\_\_ Kids @ \$ \_\_\_\_\_ each = \$ \_\_\_\_\_

\$ \_\_\_\_\_ Total Cost

# \_\_\_\_\_ Children under 2 FREE

Double Total Cost = \$ \_\_\_\_\_

# \_\_\_\_\_ Vegetarian meals

Names of Vegetarians

Names of Other Attendees

Phone

Email

Credit Card Number (VISA, MasterCard, Discover Only)

Expiration Date

Security Code

Printed Name

Signature

Date



## A MESSAGE FROM THE HEAD OF SCHOOLS

I don't know about you, but I am excited to be saying goodbye to 2012 and to welcome 2013 with open arms. **Don't get me wrong, 2012 was surely exciting for the different**

**departments of education at Beth Shalom:** collaborations, joint programming, national awards, re-accreditations, an art studio, a community Shabbaton, Facebook pages, retirements, opening enrollment, the largest turnout at Latkepalooza, a fun-filled grandparents and special friends day, associate directors and so much more. That being said, it was also a very challenging year. We were faced with tough decisions about our budgets and the future of Jewish education in our building and in our community. Sure, we took on these challenges and overcame them. We worked together, learned from each other, and came out much stronger than we started. I do not assume that 2013 will be easier. I am simply indicating that we are now prepared for anything that may come our way.



The Beth Shalom Early Learning Center said TODAH RABAH and MAZEL TOV to Toby Neufeld, better known as Mrs. Neufeld to her students, for her 22 (and a half) years of dedication to our youngest Congregants. Mrs. Neufeld

retired from the preschool classroom on December 14th, where she taught our 3's. Over the years, her alumni returned to Beth Shalom and sent their children to our school and her classroom. We celebrated Toby's retirement at the school's family Chanukah celebration on December 7th, and with her colleagues on December 13th.

Mrs. Neufeld will continue to be a valuable member of the

Preschool Committee and is looking forward to helping with the our 25th anniversary celebration.

Thank you/Todah Rabah to all who assisted in making a very successful Latkepalooza. This was the third year of the event. This year instead of different kinds of Latkes, we had different kinds of toppings: apple sauce, parve sour cream, ketchup, fiesta dip, and sweet cream. The grape, chocolate, strawberry, and even plain sufganiyot were absolutely delicious! The games were both fun and challenging. The creativity was buzzing as children made holiday cards, their own wax candles, and even dreidels out of clay. Rabbi Werbow showed us how to press our own olive oil for our Chanukiyot, and Lynn Berman kept us on our feet with dancing. Fun was had by all! I am looking forward to next year as Chanukah and Thanksgiving fall together. I already heard from many who are looking forward to deep fried turkey and Latkes. Todah Rabah to: Carolyn Gerecht, Carrie Fogel, Ira Frank, Beth Elinoff, Lisa Schlar, Michelle Mark, Rabbi Werbow, Diane Cohen, Rich Feder, Sabina Robinson, Adrienne Indianer and all of our volunteers.

Kol tuv,  
Liron Lipinsky

**Find us on the web!**

**[www.bethshalompreschool.com](http://www.bethshalompreschool.com)**

*Friend us on Facebook!*

[www.facebook.com/JointJewishEducationProgram](http://www.facebook.com/JointJewishEducationProgram)

[www.facebook.com/BethShalomPreschool](http://www.facebook.com/BethShalomPreschool)

## WHAT'S HAPPENING IN THE RELIGIOUS SCHOOL?

### January

**1 & 3: Closed for Winter Break**

**8: Religious School Resumes-**

**21: MLK Program 5<sup>th</sup>-12<sup>th</sup> graders**

**25: J-JEP Shabbat Service & Dinner**

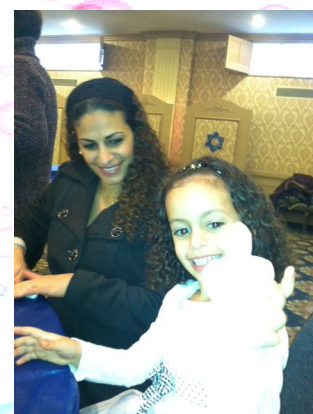
**26: B&B Mincha/Ma'ariv 5:10 p.m.**

**27: NO J-JEP CLASSES**

### February

**3: World Wide Wrap**

**24: Purim & Purim Carnival**



**THIRD  
ANNUAL  
LATKEPALOOZA!**



# EVERY DAY IS A NEW DISCOVERY IN PRESCHOOL!



## EARLY CHILDHOOD DEPARTMENT CALENDAR

January			
Tuesday	1	Winter Recess	NO SCHOOL
Wednesday	2	SCHOOL RESUMES	
February			
Monday	4	100 <sup>th</sup> Day of School!	
Monday-Friday	4-8	Parent Teacher Conference Week	
Monday	18	President's Day (Staff In-Service)	NO SCHOOL
Friday	22	All School Family Purim Celebration	1PM

## REMINDER: Early Childhood Department CLOSINGS & DELAYS POLICY



The following policy applies to ALL children, both Academic Year & Full Year children.

Beth Shalom Preschool delays and closings are made on an individual, case-by-case basis and take into consideration the following:

- ◇ Road conditions and significant weather that impacts roads/travel
- ◇ Accessibility of our school to families and staff
- ◇ Delays and closings of surrounding universities and school districts

Beth Shalom reserves the right to modify programming in order to meet State, NAEYC and Keystone requirements.

**Remember that a "safety first" approach should always be your first consideration regarding inclement weather and your decision as to whether or not to attempt to get to school.**

### Notification of delays/closings:

Every effort will be made to notify families by 6am the day of the delay or closing. When delayed, Beth Shalom will make every effort to remain open for the rest of the day, however **it is the responsibility of families to check for any change in status from delayed to closed.**

If the Early Childhood Department is delayed 1 hour, the daycare and preschool will open its doors at 8am; if the delay is 2 hours, we will open at 9 am. The start of the school day is not affected by any delay.

All delays and/or closings will be broadcast in the following way:

KDKA (watch or listen for Beth Shalom Early Childhood Department)

WPXI (watch or listen for Beth Shalom Early Childhood Department)

Outgoing phone message of Beth Shalom Preschool (412-421-8857)

Outgoing email to families when possible

\*Please note: If "Beth Shalom Early Childhood Department" is NOT listed, there is NO delay or closing



## A MESSAGE FROM THE YOUTH DIRECTOR

### At Congregation Beth Shalom, our Youth Department continues to thrive!

With a wide variety of programming for Chaverim (K-2<sup>nd</sup>), Atid (3<sup>rd</sup>-5<sup>th</sup>), Kadima (6<sup>th</sup>-8<sup>th</sup>) and USY (9<sup>th</sup>-12<sup>th</sup>) throughout the fall and winter – from basketball games; to USY Newsflash Shabbat; to trips to FunFest, Shabbat onegs, and even hosting a regional convention– we continue to stay very busy, while we look forward to another great year jam-packed with events for all ages.

This fall, **Chaverim** met in the Youth Lounge on a Saturday night for “Chaverim Goes to the Shuk,” where friends could practice bargaining for items in an Israeli open market. Afterwards, we enjoyed fruit smoothies and Israeli snacks.

**Atid** took a trip to Romp and Roll, for a fun night of rollerblading and video games following Havdallah together in the Youth Lounge.

**Kadima** continues to meet for bi-weekly Open Lounge nights every other Tuesday (check the Youth Blog for dates!). Additionally, while Beth Shalom enjoyed an incredible 95<sup>th</sup> anniversary celebration in November, Kadima celebrated the weekend with Survivor-themed games and snacks from Beth El Congregation and Tree of Life/Or L'Simcha at an overnight here at Beth Shalom. It was a blast, and Kadimaniks are excited to see these new friends at Kadima Kinnus in Columbus, Ohio, January 18-20.

**USY** has also been full of activity. In addition to weekly Open Lounge nights and Shabbat text study, USY met up on a Saturday night in the Youth Lounge for

“Kindergarten Night” this fall, a throwback to our favorite snacks and games from Kindergarten. Turnout was great, and we loved the chance to enjoy hot chocolate, Hungry Hungry Hippo, childhood television shows, and more! This November, USY also held a Shabbat oneg dinner in the Macklers' home; and in December, we planned a Lunch and Learn at Beth Shalom on the Chanukah miracle.

Of course, we can't forget **Latkepalooza** this December too, a massive joint celebration of Chanukah with Beth Shalom's Early Learning Center, J-JEP, and the Youth Department. Our entire community came out for a wonderful morning of latkes and sufganiyot, carnival games, Chanukah crafts, Israeli dances with Lynn Berman, and music! **Kol HaKavod to Head of Schools Liron Lipinsky, for an amazing job organizing this event.**

Don't forget to check us out on Facebook! Friend “Beth ShalomYouth” (ShalomYouth one word) for updates and more – or visit the Youth Experience Blog, [www.cbseducation.wordpress.com](http://www.cbseducation.wordpress.com), for photos of recent events, youth group calendars, and online youth group registration.

Have a Happy and Healthy 2013. On behalf of Youth Commission Chairs Dana Himmel and Lisa Weissfeld, USY Advisor Sam Mellits, Kadima Advisor Michelle Kerbel, and Chaverim/Atid Staff Member Brooke Gunter: **we look forward to seeing you soon!**

*L'hitraot,*  
Carolyn

## Purim Fun for Everyone!



### Saturday, February 23, 2013

Mincha Service	5:30 p.m.
Seudah Sh'lisheet	6:00 p.m.
Ma'ariv Service	6:30 p.m.

Homestead Hebrew Chapel
Eisner Commons
Helfant Chapel

### **Family Megillah Readings 6:45 p.m. (Two Opportunities to Celebrate!)**

Families & Children up through 2nd grade

Kadima & Atid Groups (Grades 3-8) view a screening of the Purim video made by Kadima

### **Full Megillah Reading**

**8:00 p.m. Helfant Chapel**

### Sunday, February 24, 2013

Morning Service	8:00 a.m.
-----------------	-----------

Helfant Chapel
----------------

Full Megillah Reading	8:45 a.m.
-----------------------	-----------

Helfant Chapel
----------------

<b>Purim Carnival!</b>	<b>10:00 a.m.</b>
------------------------	-------------------

<b>Samuel &amp; Minnie Hyman Ballroom</b>
---

## Today Rabah from the Youth Department

Helene Kessler Burke

Beth Elinoff

Greg Engel

Adam Kolko

***For driving to Atid (3<sup>rd</sup>-5<sup>th</sup> grade) Romp and Roll, Oct. 27***

The Mackler Family

***For hosting USY for Shabbat dinner, Nov. 9***

Lynn Berman

***For teaching Israeli dance to BSUSY, Nov. 29***

Rabbi Aaron Bisno

Rabbi Michael Werbow

***For teaching Atid to bake and braid challah, Dec. 2***

Beth Elinoff

Rich Feder

Ira Frank

Adrienne Indianer

Sabina Robinson

Lisa Schlar

**AND ALL OF THE J-JEP TEACHERS AND MADRICHIM  
For all their help!**



See page 18 to  
sponsor a booth at the  
Purim Carnival!

## Upcoming Dates: Youth Department

*\*Join our Facebook page (friend Beth ShalomYouth) or visit the blog (cbseducation.wordpress.com) for more information.\**

Kadima Open Lounge Tuesdays 6:00 – 7:00 p.m.

**January 8 & 22, February 5 & 19, March 5 & 19**

**Friday – Saturday, January 11-12:** BSUSY Board Shabbat

**Sunday, January 13:** Chaverim Packs Welcome Bags for Ronald McDonald House, Scavenger-Hunt Style!

**Saturday, January 19:** BSUSY Shabbat Afternoon Chillz

**Friday- Saturday, January 18-20:** CRUSY Kadima Kinnus in Columbus, OH

**Friday, January 25:** BSUSY Tu Bishvat Seder

**Sunday, January 27:** Atid Volunteers, BSUSY Goes to Reel to Real

**Friday, February 8:** Pittsburgh USY Tri-Chapter Shul-In

**Saturday, February 16:** BSUSY Campfire

**Saturday, February 23:** Megillah Readings

**Sunday, February 24: Purim Carnival!!**

**Thursday – Sunday, February 28 – March 3:** CRUSY Specialty Kinnus in Dayton, OH

**Saturday, March 9:** Pittsburgh USY, NFTY & BBYO Joint Dance at Temple Sinai

**Sunday, March 10:** Empty Bowls at Rodef Shalom Congregation

**Saturday, March 16:** Chaverim Movie Night, BSUSY Death by Chocolate

**Sunday, March 17:** Kadima Chocolate Seder!

**Sunday, March 26:** Atid Chocolate Seder!

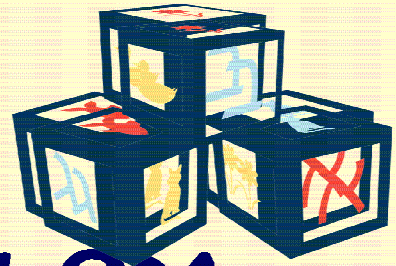
**THANK YOU TO ALL OF THE VOLUNTEERS THAT  
HELPED MAKE OUR THIRD LATKEPALOOZA GREAT!**



**Today Rabah**



# Lifelong Learning Starts Here at Beth Shalom Early Learning Center



Check us out online!  
[www.BethShalomPreschool.com](http://www.BethShalomPreschool.com)



Part-Time & Full-Time Schedules

6 weeks old through Pre-K

Art, Music, & Science

ESL Teacher on Staff

Playground & Indoor Gym

NAEYC & Keystone Accredited

Reggio-Inspired

## Need - Based Scholarships Available for 3 & 4 year olds



## Contact us today to schedule your PERSONALIZED Tour.

**BethShalom**  
בית שלום

5915 Beacon Street  
Pittsburgh, PA 15217

412.421.8857 ☀ [preschl@bethshalompgh.org](mailto:preschl@bethshalompgh.org)



# SHABABABABA

## JANUARY 25 & FEBRUARY 22



This winter bring your age 8 and under kids to a family friendly Shabbat experience with Rabbi Donni Aaron, Rabbi Werbow and Cantor Ben Rosner.

*SING, DANCE, PRAY AND LISTEN TO STORIES  
AS YOU EXPERIENCE SHABBAT WITH  
YOUR CHILDREN!*

### Pricing

Until January 18/ February 15  
\$10.00 for Adults & Kids Age 8+  
\$8.00 for Kids Ages 2-7  
Kids under 2 are FREE  
After Jan. 18/Feb. 15: +\$5.00/each

**February: PURIM COMES  
TO SHABABABABA!**

**Shababababa © January 25 February 22**

Please RSVP to Judy at 412.421.2288 ext. 110

# _____ Adults @ \$ _____ each = \$ _____	Attending both dates?	# _____	Total Attending
# _____ Kids @ \$ _____ each = \$ _____		\$ _____	Total Cost
# _____ Children under 2 FREE	Double Total Cost = \$ _____	# _____	Vegetarian

Names of Vegetarians

Names of Other Attendees

Phone

Email

Credit Card Number (VISA, MasterCard, Discover Only)

Expiration Date

Security Code

Printed Name

Signature

Date

*Mishpachtenu*



## A MESSAGE FROM THE SISTERHOOD PRESIDENTS

Sisterhood continues to be busy planning opportunities where women of all ages can come together to socialize, learn new things, and practice tikkun olam in the community. At the end of November, we had another very successful membership event, Mixology and Karaoke, co-chaired by Saralouise Reis and Rachel Albert. Our guest speaker, Melinda Freed, introduced us to some delicious kosher alcoholic and non-alcoholic cocktails that were easy to make and serve at parties. We sampled some interesting drinks, enjoyed some munchies, and received more recipes to add to our recipe boxes. The second half of the evening was wild and crazy as many of our sisterhood members came forward to sing their favorite Karaoke song for all to enjoy.

Having recently attended the Women's League for Conservative Judaism Convention held in Las Vegas on December 2-5, we returned energized and excited with new ideas to share. Women's League for Conservative Judaism (WLCJ) is the international umbrella organization under which our Sisterhood falls. In addition to hearing words of wisdom from the professional and lay leaders of the Conservative Movement, we had the opportunity to connect with 400 other women from Sisterhoods throughout the U.S. and Canada, including 43 people from our own Central Great Lakes region. Here are some brief highlights from Convention:

Sunday's opening convention address was given by a dynamic speaker, Dr. Deborah Silver, from Congregation Ari El, California. Her message to the international group concerned implementing change in order for sisterhoods to thrive in the 21st century. Another keynote speaker during the conference, Rabbi Elliot Dorff, discussed how conservative halacha has maintained its deep commitment to religious practices and ethics while confronting contemporary issues. We were also inspired by Dr. Arnold Eisen, Chancellor of J.T.S., who shared new information about the strong devotion of the conservative movement to

Torah Fund over the years. Rabbi Bradley Shavit Artson also spoke about new trends in Jewish spirituality. We participated in sessions for Sisterhood Presidents and several hands-on activities that we look forward to sharing with our sisterhood. We enjoyed the ruach, meeting women from all over, and were inspired by many of the special sessions we attended. We also look forward to sharing several projects introduced to us by a very special woman, "the mitzvah maven." We were especially thrilled to spend time with our regional president, Rhonda Cohn, who made us feel very welcome.

We give a special thank you to Cheryl Blumenfeld and her committee for planning a fun and festive Chanukah Breakfast held on December 16, which included a gift exchange and Tikkun Olam project for the Women's Shelter. It was wonderful to culminate the Festival of Lights together among friends.

More great programs are in the works so please make sure you are included on our Sisterhood email list so you can receive the latest Sisterhood news and information. If you want to add your email to the list, please let one of us know.

Stay tuned for our Super Bowl Chili and appetizer sale in January, a Purim-themed membership event, Keshet speaker programs, and more. Just so you know, **Sisterhood Shabbat and our Torah Fund brunch will take place on March 2-3, 2013.**

We continue to live in a world of uncertainty. The constantly changing situation in Israel has been in our hearts and minds for the past few months. Let us all pray for a good year, filled with peace and a safe resolution to a global conflict that overshadows our thoughts on a continuous basis. We wish everyone a Happy and Healthy 2013.

B'Shalom,

Debby Firestone  
412-521-4879

Dorothy Greenfield  
412-521-5217

Connie Pollack  
412-422-6260



# Sisterhood Sings!





## A MESSAGE FROM THE MEN'S CLUB PRESIDENT

As we now start 2013, my wife, Randi, and I wish everyone a happy new year. We just finished our 2012 Sweepstakes with a wonderful dinner planned by Ira Frank and Sandy Zaremborg. Everyone that I have spoken with said that this year's meal was the best one ever, and that having it on a Saturday night was a perfect idea. 2013 sweepstakes tickets can be purchased now just contact ira at natfabira@juno.com or me at dtire@zoominternet.net

On February 10th, we will have our sports luncheon. This is when we invite children and young adults with special needs to Beth Shalom for an afternoon to have lunch and meet local sports figures. We do not charge them or their aids. This event is funded by people we call 'angels' who sponsor a one or more tables. Last year we had over 500 people, and were featured on the channel 4

news and in the Pittsburgh Post-Gazette.

If you are interested in sponsoring a table, please contact me, Steve Neustein sanlaw@juno.com or Jeff Rosenthal at jeff2827@aol.com.

Once again I am asking if anyone has anything they would like to see the Men's Club do, please let me know. In the 18 months since I took this office, I have only had 2 ideas sent to me. One was from our Past-President Mark Frisch which was to watch the Steelers in last years playoff game, where we had about 20 people attend. The other was from Cantor Ben, whose idea of having music in the sukkah this year tripled our attendance. I welcome all ideas, and wish you a safe winter season.

Marc Berliner



## Spice Up Your Super Bowl Sunday

AND SUPPORT BETH SHALOM SISTERHOOD WITH  
**CHILI and ZUR'S FAMOUS APPETIZER PLATTER**

ORDERS ACCEPTED THROUGH JANUARY 25<sup>TH</sup>

PICK UP ON SUNDAY, FEBRUARY 3<sup>RD</sup>

9:30 AM – 1:00 PM

SAMUEL AND MINNIE HYMAN BALLROOM

Meat & Bean Chili	_____ quarts @ \$10.00/quart = \$_____
No-Bean Meat Chili	_____ quarts @ \$11.00/quart = \$_____
Vegetarian Chili	_____ quarts @ \$8.00/quart = \$_____
Appetizer platter	_____ platters @ \$20 serves 6/8 = \$_____

Choose any 6 salads: \_\_\_\_\_ Hummus \_\_\_\_\_ Tabouleh \_\_\_\_\_ Guacamole \_\_\_\_\_ 3 bean salad \_\_\_\_\_ Egg salad \_\_\_\_\_ Israeli salad  
\_\_\_\_\_ Pickled Mushrooms \_\_\_\_\_ Carrot salad \_\_\_\_\_ Bbaba Ganoush \_\_\_\_\_ Grape leaves \_\_\_\_\_ Tzatziki salad \_\_\_\_\_ tuna salad  
(pita included)

**TOTAL ORDER = \$ \_\_\_\_\_**

Name: \_\_\_\_\_

Phone Number: \_\_\_\_\_ Email: \_\_\_\_\_

*Make your checks out to Beth Shalom Sisterhood, and Mail them*

*to: 5915 Beacon Street Pittsburgh, PA 15217,*

*ATTN: Chili and Appetizer Sale*

Please contact Debby Firestone (debbyfire@aol.com) or Dorothy Greenfield (412 521-5217)

If you have questions or would like to volunteer

Mishpachtenu



# YAHREZEIT DONATIONS



***The following individuals have made contributions to the synagogue in memory of their loved ones. Thank you to all those who have done so, and may the memory of your loved one(s) be for a blessing***

***October 1, 2012–  
December 20, 2012***

Cynthia Abrams  
Anna Adler  
Scott Allen  
Florence Alpern  
Gerald Alpern  
Ruth Altshuler  
Stuart Anish  
Seymour Antman  
Florence Aronson  
C. Daniel Askin  
Barbara Azizo  
Joseph Baem  
Edwin Baker  
Semyon Barash  
Shirley Barasch  
Marcie Barent  
Daniel Bendas  
Sophie Berdichevsky  
Willie Berg  
Elaine Berkowitz  
Velma Berkey  
Irwin Berliner  
Howard Berman  
Rena Bernstein  
Thomas Bernstein  
Cheryl Blumenfeld  
Maurice Braunstein  
Jan Bress  
Roselyn Bris Bois  
Sheila Britz  
Herbert Brody  
Susan Brody  
Nancy Bromberg  
Morris Brookner  
Marshall Brown  
Florence Burechson

Sally Calig  
Hedy Caplan  
Rebekah Caplan  
Lillian Casper  
Jonathon Charney  
Herbert Chernoff  
Martin Childs  
Andrea Cohen  
Carole Cohen  
Carolyn Cohen  
James Cohen  
Joseph Cohen  
James Colker  
Eileen Cook  
Jennifer Darling  
Lea E. Davidson  
Hilda Demsky  
Jack Dym  
Paula Eger  
Sheldon Elsen  
Judy Epstein  
Russell Eschbacher  
Amanda Farrar  
Evelyn Favish  
Richard Feder  
Shirley Feldman  
Ronald Fibus  
Mark Fichman  
Ben Finesod  
Jay Fingeret  
Marilyn Finger  
Jonathan Finkel  
Susan Fisher  
Michael Foreman  
Honey Forman  
Barbara Franklin  
J. Leonard Frank  
Debra Freiser  
Scott Friedman  
Robert Garvin  
Ruth Garvin  
Elayne Gilbert  
Jeannette Gilbert  
Harvey Gillis  
Hyman Ginsberg  
Robert Ginsburg  
Lawrence Glanz  
Kenneth Glick  
Bruce Goldberg  
Louis Goldszer  
Marjorie Goldstein  
Morton Goldstein

Renee Goldman  
Robert Goldman  
Ruben Goldberg  
Wendy Goldberg  
Terri Gould  
Edythe Greenberg  
Kathie Green  
Ronna Greenberg  
Dorothy Grinberg  
Ellen Grinberg  
Leonard Grobstein  
Beverly Groudine  
Mark Groudine  
Myriam Gumerman  
Barney Guttman  
Harold Haffner  
Gilbert Harris  
Stuart Harris  
Ronald Hartman  
Rick Helfer  
Ted Heyman  
Joseph Hoffman  
William Hoffman  
H. Hohn  
Marsha Holcomb  
Larry Holtzman  
Stanley Horn  
Emil Horowitz  
Richard Horowitz  
David Horvitz  
Mark Horvitz  
Arlene Johan  
Joseph Jolson  
Perry Jubelirer  
Richard Judd  
Earl Kaiserman  
Charles Kalson  
Joan Kamin  
Jules Kann  
Richard Kantrowitz  
Lillian Katzman  
Robert Katz  
Carole Kaufman  
Richard Kessler  
Alexander Kiderman  
Joel Kimel  
Myrna Kingsley  
Judith Klarfeld  
Natalie Klein  
Steve Klein  
Harriet Kluchman  
Gerald Kobell

Irwin Kotovsky  
Elliott Kramer  
Carl Krasik  
Rachel Krasnow  
James Krell  
Jules Kruman  
Felice Krupp  
Shirley Kurtz  
Michael Kweller  
Howard Lang  
Ruth Lasday  
Arnold H. Lazarus  
Beverly Lebovitz  
Judith Lebovitz  
Lois Leff  
Jocelyn Lehman  
Yaier Lehrer  
Paul Leipzig  
Harold Lenchner  
Elaine Levenson  
Judd Levenson  
Merle Levine  
Rita Levinson  
Robert Levin  
Sandra Levine  
Ruth Levy  
Harriet Lewis  
Eileen Liepack  
Harvey Lincoff  
Arthur Lippmann  
Marc Lipsitz  
Sanford Lipsitz  
Susan Lipsitz  
Donald Machen  
Alan Maglin  
Michael Mallinger  
Sherry Malone  
Jack Malvin  
Jack Marcus  
Carol Margolis  
Gerald Margolis  
Alvin Markovitz  
Barry Markovitz  
Mary Marks  
Thomas Marmins  
Bernard Mars  
Leonid Mats  
Lillie Meglino  
Barbara Mendlowitz  
Gerald Mendelbaum  
Joel Merenstein  
Herbert Meyers





# YAH RZEIT DONATIONS



Jack Meyers  
Isabel Miller  
Rachel Millstone  
Edward Moravitz  
Harriet Moses  
Yuriy Mudrenko  
Rona Mustin  
Morris Naimark  
David Neft  
Lee Neiman  
Daniel Nizhner  
Stuart Nord  
Steven Nydes  
Shirley Oppenheim  
Frances Ortenberg  
Leonard Ortenberg  
Carol Pearlman  
Jacob Pelled  
Harriet Perlman  
Mark Perlin  
Jane Pettko  
Amir Pilch  
Mildred Plack  
Miriram Platt  
Sondra Pollack  
Stanley Pollock  
Alex Rapport  
Shirley Rapport  
Zelik Ratchkauskas  
Marilyn Rattner  
Morton Reichbaum  
Bruce Reingold  
Esther Resnick  
Sylvia Reznick  
Sidney Rice  
Arnold Robbins  
Gertrude Roberts  
Jean Robin  
Larry Robin  
Lois Robins  
Ronna Robinson  
Ferne Rogow  
David Rosenbloom  
Dorothy Rosen  
Don Rosenthal  
Elaine Rosecrans  
James Rosenthall  
Jack Rosen  
Jerome Rosenberg  
Kelli Rosen  
Mitchell Rosenfeld  
Murray Rosenbaum

Norman Rosenfeld  
Rochelle Rosen  
Robert Rosenthal  
Sidney Rosen  
Ralph Roskies  
Howard Rossen  
Joseph Ross  
Belle Roth  
Myron Roth  
Bernard Rubb  
Alexander Rybchinsky  
Bruce Sachnoff  
Murray Sachs  
Joseph Safyan  
Michael Samuels  
Steven Santman  
Ruth Savitz  
Jonathan Schachter  
Dorothy Schorin  
Robert Schutte  
Margery Schwartz  
Selma Schwartz  
Irving Segal  
Lloyd Seiavitch  
Adam Selker  
Ellen Selker  
Lester Shapiro  
Paul Shapiro  
Florence Sherman  
Mark Sherman  
Harvey Shipkovitz  
Bernard Shire  
Mindy Shreve  
Rhoda Shugerman  
Herbert Shuman  
Michael Siegel  
Saundra Siegel  
Marianne Silberman  
Ralph Silverman  
Cina Simon  
H. Simon  
Mark Simon  
Robert Simon  
Samuel Simon  
Marlyn Sinclair  
Sandra Singer  
Tamara Skirboll  
Harold Smolar  
Sharon Snider  
Eric Snyder  
Robert Solomon

Max Somers  
James Spevock  
Clifford Spungen  
Ahuva Stadtlander  
Dalia Stadtlander  
Jane Stanton  
Bernard Stein  
Betty Steinfeld  
Gary Stein  
Jay Stein  
Karen Stein  
Sidney Steingart  
Steven Stoller  
Murry Swartz  
Edward Tables  
James Tauberg  
Myron Taube  
Judith Teitelman  
Bonnie Theiner  
Lawrence Tucker  
Robert Tucker  
Leona Vanscoyk  
Richard Wagner  
Harry Waldbaum  
Florence Walk  
Albert Wein  
Helene Weiner  
Jonathan Weinkle  
Shirley Weinberg  
Edward Weiss  
Goldie Weiss  
Gerald Weisman  
Lee Weiss  
Patricia Weiss  
Stanton Weiser  
Betty Weitz  
Shirley Weitz  
Norman Weizenbaum  
Larry Whitman  
Harry Wigder  
Charles Wilf  
Ronnie Wilk  
Sylvia Williams  
Fred Young  
Leonard Young  
Nathan Young  
Yevgeniy Yuger  
Alex Yurkovetsky  
Sanford Zaremborg  
Barbara Zelekovitz

Albert Zionts  
Milton Zlotnik  
Arnold Zukerman  
Neal Zweig  
Allan Zytnick

**Have you sent your  
birthday  
greetings yet?  
Stop by the Beth  
Shalom Office and  
pick up a  
Birthday Flier!**



**Send a card to all of  
your friends at Beth  
Shalom for only  
75 cents each!**



**Have you been  
meaning to  
purchase a Yahrzeit  
Plaque for your  
departed loved one?**

**An order form can  
be found on page 19  
of this issue!**

# Purim Carnival 2013!

Sunday, February 24, 2013

10:00 a.m. – 1:00 p.m.

Samuel & Minnie Hyman Ballroom

Every year, BSUSY puts on a huge Purim Carnival for our entire community, complete with 20+ carnival games, lots of big prizes, hamantaschen, tzedakah tables, raffles, music, facepaint and more! This event would not be possible without your support.

## Will you consider a donation to our youth for the Purim Carnival?

All donors receive recognition in the bulletin, their names on an easel at the carnival, and of course, a letter of thanks from USY.

## Support Our Youth:

Sponsor a Children's Arts and Crafts Table.....\$18.00

Sponsor a Game Booth.....\$36.00

*Help us to make this Purim Carnival better than EVER before!!*

Sponsor a Food Table.....\$54.00

Sponsor a Table of Prizes.....\$72.00

**Patron of the Purim Carnival.....\$118.00**

Our largest contributors receive official recognition as Patrons of the Purim Carnival.

Name \_\_\_\_\_

Address \_\_\_\_\_

Email Address: \_\_\_\_\_

*I would like to support USY with a donation to the 2013 Purim Carnival:*

\_\_\_ \$18 \_\_\_ \$36 \_\_\_ \$54 \_\_\_ \$72 \_\_\_ \$118 \_\_\_ Other: \_\_\_\_\_

*Attached is a check payable to Congregation Beth Shalom OR*

Credit Card # \_\_\_\_\_ Expiration Date \_\_\_\_\_

Signature \_\_\_\_\_ Telephone # \_\_\_\_\_

Return this form to Congregation Beth Shalom – Youth Department, 5915 Beacon St. Pgh, PA 15217.

**Thank you!**

# Yahrzeit Plaques

PLAQUES WILL BE UNVEILED DURING YIZKOR SERVICES OF  
YOM KIPPUR, SHEMINI ATZERET, PESACH, AND SHAVUOT

	Member Rate	Non-Member Rate
<input type="checkbox"/> PLAQUE IN THE FAYE RUBENSTEIN WEISS SANCTUARY	\$400	\$500

**When you purchase a Yahrzeit Plaque, we make the commitment that the name of your beloved will be published in the Shabbat bulletin on the Shabbat preceding the anniversary of the yahrzeit.**

Please complete and mail the following form today with your check to:  
Congregation Beth Shalom , 5915 Beacon Street, Pittsburgh, PA 15217

Please Print in BOLD Letters

English Name of Deceased: \_\_\_\_\_

Date of Death: \_\_\_\_\_  
(English Date) (Hebrew Date) Before/After Sunset?

Ordered By: \_\_\_\_\_  
(Name - Please Print) (Telephone)

Address: \_\_\_\_\_  
(Street) (City) (State) (Zipcode)

Email address: \_\_\_\_\_

Your Relationship to Deceased: \_\_\_\_\_

Choice of Unveiling Date: ☐ YOM KIPPUR 2013 ☐ SHEMINI ATZERET 2013 ☐ PESACH 2013 ☐ SHAVUOT 2013

**PLEASE LIST COMPLETE NAMES AND ADDRESSES OF THOSE WHO WISH TO BE NOTIFIED FOR THE YAHRZEITS**

\_\_\_\_\_  
(Name) (Address) (City/State/Zip) (Relationship)

\_\_\_\_\_  
(Name) (Address) (City/State/Zip) (Relationship)

\_\_\_\_\_  
(Name) (Address) (City/State/Zip) (Relationship)

## PAYMENT INFORMATION

☐

Visa

☐

MasterCard

Name on Credit Card: \_\_\_\_\_

Credit Card Number: \_\_\_\_\_ Exp. Date: \_\_\_\_\_ Security Code: \_\_\_\_\_

Amount to be applied to Credit Card: \$ \_\_\_\_\_

OR

Check Enclosed: \$ \_\_\_\_\_ Signature: \_\_\_\_\_

Thank you very much!

# News in Our Congregational Family

- **Bunny Morris** was honored with the William A. G. Fisher Award given by Taylor Allderdice High School.
- **Melissa and Rabbi Michael Werbow** celebrated the birth of their son, **Asher Avraham**.
- **Judy and Samuel Kayam** celebrated the birth of their grandson, **Tal**.
- The following members were recognized as **Outstanding Volunteers** by the Jewish Federation of Greater Pittsburgh : **Janice Bahary** - Community Day School, **Sondra I. Glasser** - Hadassah, Greater Pittsburgh Chapter, **Robert L. Katz** - Congregation Beth Shalom , **Judith Kornblith Kobell** - NA'AMAT USA Pittsburgh Council, **Bernice Meyers** - Jewish Family and Children's Service, **Jesse Rosenthal** - B'nai Brith Youth Organization, **Harry Schneider** - Holocaust Center of the Jewish Federation, and **Max Steinberg** - Friendship Circle.
- **Natalie and Lonnie Wolf** celebrated their grandson, **Jonah Meir Wolf**, becoming a Bar Mitzvah.
- **Mitzi and Merle Levine** celebrated their grandson, **Benjamin Noah Levine**, becoming a Bar Mitzvah.
- **Brian Cohen** organized a photography exhibit on fracking at the Pittsburgh Filmmakers Gallery.
- **Sheila and Alex Cohen** celebrated the birth of their granddaughter, **Penina Rose**.
- **J'Burgh** under the leadership of David Katz has been recognized as one of the 50 most innovative Jewish non-profits in North America by Slingshot.
- **Ilene and Jay Fingeret** celebrated the birth of their grandson, **Julius Fingeret Roth**.
- **Charilee Levy** celebrated her granddaughter, **Lauren Levy**, becoming a Bat Mitzvah.
- **Greta Hineck-Strahl** celebrated her grandson, **Jason Piechowicz**, becoming a Bar Mitzvah.
- **Paula Eger** celebrated the birth of her granddaughter, **Avonlea Juliet Eger**.
- **Shelli and Larry Glanz** celebrated the marriage of their daughter, **Melissa Glanz** to **Brian Worthy**.
- **Natalie and David Rosenbloom** celebrated the birth of their granddaughter, **Kenzie Ellie Winston**.

## WE THANK THE GENEROUS SPONSORS OF EACH KIDDUSH FOLLOWING SHABBAT SERVICES

### OCTOBER

- |      |   |  |
|------|---|--|
| 13th | - | <b>Mike and Ellen Siegel</b> in honor of the aufruf of their son, <b>Brian Siegel</b>                        |
|      | - | <b>Patty and Harry Schneider</b> in honor of their 50th Wedding Anniversary                                  |
| 20th | - | <b>Steve and Tammie Moritz</b> in honor of their son, <b>Adam</b> , becoming a Bar Mitzvah.                  |
| 27th | - | <b>Marlene Behrmann Cohen and David Plaut</b> in honor of their son, <b>Daniel</b> , becoming a Bar Mitzvah. |

### NOVEMBER

- |      |   |  |
|------|---|--|
| 3rd  | - | <b>Sherri and Fred Mayer</b> in honor of their son, <b>Jonah</b> , becoming a Bar Mitzvah.   |
| 10th | - | <b>Jody and Steven Berger</b> in honor of their daughter, <b>Rachel</b> , becoming a Bat Mitzvah.  |
| 17th | - | <b>Jane and Bruce Rollman</b> in honor of their daughter, <b>Rachel</b> , becoming a Bat Mitzvah.  |
| 24th | - | <b>Huvvy and Meyer Simon and Alice and Norman Jaffe</b> in honor of their granddaughter, <b>Jennifer Jaffe</b> , becoming a Bat Mitzvah. |

If you would like to become a Shabbat Kiddush sponsor in honor or in memory of a loved one please contact the Beth Shalom office at 412-421-2288



# Shabbat Candle Lighting Times



**JANUARY 4** **4:49 P.M.**

**JANUARY 11** **4:56 P.M.**

**JANUARY 18** **5:03 P.M.**

**JANUARY 25** **5:11 P.M.**

**FEBRUARY 1** **5:20 P.M.**

**FEBRUARY 8** **5:28 P.M.**

**FEBRUARY 15** **5:37 P.M.**

**FEBRUARY 22** **5:45 P.M.**

## NEECHUM AVELIM

- **Ronald Blank** on the passing of his beloved mother, **Marion Topolsky**.
- **Helen Eaton** on the passing of her beloved husband, **Joseph Eaton**.
- **Zelda Schreiber** on the passing of her beloved husband, **Morton Schreiber**.
- **Raisa Vaysleyb** on the passing of her beloved husband, **Gregory Vaysleyb**.
- **Sylvia Reznick and Paul Reznick** on the passing of their beloved husband and father, **Aron Reznick**.
- **Lynda Schuster** on the passing of her beloved father, **Monis Schuster**.
- **Elliott Blum** on the passing of his beloved father, **Jeffrey Blum**.
- **Suzanne Wagner** on the passing of her beloved mother, **Ann Plotkins Schwartz**.
- **Lonnie Wolf and Barbara Braunstein** on the passing of their beloved mother, **Lillian Wolf Firestone**.
- **Racelle Goldstein** on the passing of her beloved sister, **Marjorie Iris Apter Mann**.
- **Family of Evelyn Benkovitz**
- **Family of Flo Mae Moravitz**



## **SIMCHAS ☆ REMEMBRANCES ☆ CONGRATULATIONS**

The Congregation gratefully acknowledges these contributions as of October 12, 2012 to December 1, 2012

Please call, mail or e-mail your contributions to the shul office. Minimum donation is \$10.00, siddurim are \$30 and chumashim are \$60.

### **MILDRED AND ISADORE BERKOWITZ MEMORIAL FUND**

*In honor of:*

Bunny Morris being honored by Taylor Allderdice High School and receiving the William A. G. Fisher Award  
Elaine Berkowitz

### **BETH SHALOM BUILDING FUND**

*In memory of:*

Morton Schreiber, beloved husband of Zelda Schreiber  
Sylvia Friedman

### **CAMP RAMAH FUND**

*In honor of:*

Natalie & Lonnie Wolf's grandson becoming a Bar Mitzvah  
Ann Adler

*In memory of:*

Lillian Wolf Firestone  
Sharon, Larry & Rachel Dobkin  
Karen & Paul Shapiro

### **CEMETERY ENDOWMENT FUND**

*In memory of:*

Lillian Wolf Firestone  
Flora Lee & Bertram Katz  
Mickey & Ed Baker  
Zippora & Jerome Harris  
Ann Adler  
Cookie Elbling  
Ruth & Leonard Weiss  
Janet & Steve Stoller  
Clarice & Bob Katz  
Patti Getchell  
Beth Shalom Administrative Staff  
Shirley & Albert Wein  
Ronna & Dan Askin  
Marylyn & Edwin Baker  
Neila & Danny Bendas  
Holly & Burt Wald  
Mr. & Mrs. Greg Kalik  
Rachel Krasnow  
Jocelyn Lehman  
Frances & Michael Lando  
Nancy & Bill Berkowitz  
Mr. & Mrs. Joe Cibulas  
Mr. and Mrs. Roy Schanfarber  
Shirley Stein

### **SAMUEL AND IDA COHEN ENDOWMENT FUND**

*In memory of:*

Margie Apter Mann  
Evelyn Favish  
Larry Walkow  
Evelyn Favish

### **GIFTS & ALIYOT- GENERAL FUND**

Beth & Mark Frisch

*In honor of:*

Dori Catz leading Ashrei & Sheldon Catz leading Shabbat Services  
Mr. & Mrs. Alvin Catz

### **HOFFMAN LIBRARY FUND**

Marilyn Rattner

### **HIGH HOLIDAY MACHZOR PRAYER BOOK**

*In memory of:*

Lillian Wolf Firestone  
Sarita & Milton Eisner  
Marion Topolsky  
Karen & Paul Shapiro

*In honor of:*

Shirley & Albert Wein's Anniversary  
Claire & Morry Weinbaum

### **BETH SHALOM JUDAICA MUSEUM FUND**

*In memory of:*

Scott Allen's father-in-law  
Honey & Harold Forman  
Lois Kotler's beloved father  
Honey & Harold Forman

*In honor of:*

Bob Katz receiving the UJF Volunteer of the Year Award  
Honey & Harold Forman  
Ann Gould receiving the Nathan E Snader Award  
Honey & Harold Forman  
Judy Kobell receiving the Lester Hamburg Member of the Year Award  
Honey & Harold Forman  
Janice Bahary receiving the Outstanding Volunteer Award from the UJF of Greater Pittsburgh  
Honey & Harold Forman  
Sondra Glasser the Outstanding Volunteer Award from the UJF of Greater Pittsburgh  
Honey & Harold Forman  
Jesse Rosenthal the Outstanding Volunteer Award from the UJF of Greater Pittsburgh  
Honey & Harold Forman

### **PHILANTHROPIC FUND**

*In memory of:*

Marion Topolsky  
Rhoda & Richard Judd  
Lillian Wolf Firestone  
Susan & Leonard Young

### **PRESCHOOL SCHOLARSHIP FUND**

*In honor of:*

The birth of Melissa & Rabbi Michael Werbow's son, Asher Avraham  
Fern Moscov  
Shirley & Al Zions  
Ruth Lasday

## **SIMCHAS ☆ REMEMBRANCES ☆ CONGRATULATIONS**

**The Congregation gratefully acknowledges these contributions as of October 12, 2012 to December 1, 2012**

Please call, mail or e-mail your contributions to the shul office. Minimum donation is \$10.00, siddurim are \$30 and chumashim are \$60.

Rochelle Packard  
Laurie & Harry Zions  
Dorothy & Sam Greenfield  
Patty & Harry Schneider  
Lea & Abraham Szlinski

Bunny Morris being inducted into the Allderdice High School  
Hall of Fame  
Dorita & Manny Krifcher  
Patty & Harry Schneider's 50<sup>th</sup> Anniversary  
Zandra & Arthur Goldberg

### *In memory of:*

Joseph Eaton  
Shirley & Al Zions  
Kenneth Elias  
Claire & Morry Weinbaum  
Gregory Vaysleyb  
Mike & Ellen Siegel  
Scott Allen's father-in-law  
Mike & Ellen Siegel  
Lillian Wolf Firestone  
Lea & Abraham Szlinski  
Shirley & Al Zions

### **LYNN ROBINS MEMORIAL SCHOLARSHIP ENDOWMENT FUND**

#### *In memory of:*

The Franzos Family's recently departed loved one  
Beverly, Harvey & Randy Robins

#### *In honor of:*

Elly's Bat Mitzvah  
Beverly, Harvey & Randy Robins  
The birth of Mr. and Mrs. Arnold Epstein's granddaughter  
Beverly, Harvey & Randy Robins  
Harvey Robins' special birthday  
Connie & Harold Smolar

### **THOMAS MORDECHAI ROSENSTEIN MEMORIAL FUND**

#### *In memory of:*

Gregory Vaysleyb  
Harriet & Jules Kruman  
Lillian Wolf Firestone  
Harriet & Jules Kruman

### **SINGLES FUND**

#### *In memory of:*

Sidney Weingarden  
J. Leonard Frank

### **SISTERHOOD FUND**

#### *In memory of:*

Joseph Eaton  
Dorothy & Sam Greenfield  
Debby & Nate Firestone  
Lillian Wolf Firestone  
Cheryl Blumenfeld  
Debby & Nate Firestone

Ira Morgan  
Debby & Nate Firestone  
Evelyn Benkovitz  
Helen Eaton

#### *In honor of:*

The birth of Melissa & Rabbi Michael's son, Asher Avraham  
Cheryl Blumenfeld  
David Katz & J'Burgh  
Debby & Nate Firestone  
Rachel Berger's Bat Mitzvah  
Debby & Nate Firestone  
Daniel Plaut's Bar Mitzvah  
Debby & Nate Firestone  
Harriet Kruman's special birthday  
Debby & Nate Firestone

#### *Speedy Recovery:*

Sarita Eisner  
Debby & Nate Firestone  
Sara Gorby  
Debby & Nate Firestone  
Mimi Halpern  
Debby & Nate Firestone

### **YOUTH FUND**

#### *In memory of:*

Aron Reznick  
Saralouise Reis, Chester Spat & Sam Spatt  
Yvonne & Barry Stein  
Ronna & Dan Askin  
Ann Plotkin Schwartz  
Nancy & Bill Berkowitz  
Rhoda & Richard Neft  
Lillian Wolf Firestone  
Lea E. Davidson  
Mr. and Mrs. Robert Frumerman  
Joseph Benkovitz  
Karen & Paul Shapiro  
Fern & Alan Steckel  
Scott Allen's father-in-law  
Karen & Paul Shapiro  
Lesley & Bob Ginsburg  
Alvin Mundel  
Ruth & Leonard Weiss  
Saya Feldman  
Ida Steinberg & Family  
Joseph Eaton  
Ronna & Dan Askin  
Lynn & Steve Hecht  
Sidney Weingarden  
Tommie Goltz  
Fern & Alan Steckel  
Delores Franzos  
Evelyn Favish  
Ira Morgan

## **SIMCHAS ☆ REMEMBRANCES ☆ CONGRATULATIONS**

The Congregation gratefully acknowledges these contributions as of October 12, 2012 through December 12, 2012

Please call, mail or e-mail your contributions to the shul office. Minimum donation is \$10.00, siddurim are \$30 and chumashim are \$60.

Jordan Childs  
Ida Steinberg  
Fern & Alan Steckel

### *In honor of:*

Jonah Mayer becoming a Bar Mitzvah  
Karen & Paul Shapiro  
The birth of Benjamin & Martine Relis' grandson  
Karen & Paul Shapiro  
The birth of Melissa & Rabbi Michael Werbow's son, Asher Avraham  
Carol Lederer  
Lesley & Bob Ginsburg  
Ruth Lessing  
Lynn & Steve Hecht  
Debbie Gilman & Daniel Kass  
Helen & Rich Feder  
Janet & Steven Stoller  
Carol Beth & Michael Yoffee  
Shirley & Albert Wein's Anniversary  
Mr. and Mrs. Donald Berman  
Bob Katz receiving the UJF Volunteer of the Year Award  
Sally & Alan Greenwald  
Barbara & Peter Oleinick  
Steve Albert receiving the Ethel & Bernard Halpern Young Leadership Award  
Sally & Alan Greenwald  
Barbara & Peter Oleinick  
Ann Gould receiving the Nathan E. Snader Award  
Carol Hillelson  
Barbara & Peter Oleinick  
Judy Kobell receiving the Lester A. Hamburg Member of the Year Award  
Barbara & Peter Oleinick  
Daniel Plaut becoming a Bar Mitzvah  
Doreen & Max Cohen

### *Speedy Recovery*

Sarita Eisner  
Claire & Morry Weibaum  
Barbara & Elliott Kramer  
Natalie & Lonnie Wolf  
Jack Meyers  
Barbara & Elliott Kramer  
Arthur Silverman  
Barbara & Elliott Kramer

### **SAMUEL & MOLLIE ZYTNICK ENDOWMENT FUND**

#### *In honor of:*

Shai & Beth Gruber's Wedding  
Marian & Arnold Huttner

### **RABBI WERBOW DISCRETIONARY FUND**

**Marion Taube:** Thank you for your kind attention during my recent illnesses.

**Robin and Bill Halpern:** Thank you so much for the beautiful baby naming of Zoey Grace and the kind words about Jeff's achievements.

**Carol Pearlman and Jordan Pearlman:** Thank you for officiating at the unveiling service which was special and meaningful to us in memory of our beloved husband and father, Stanton H. Pearlman.

**Pat Weiss:** Thank you for your guidance and support in arranging the naming of my granddaughter, Liora.

**Jean Stein:** Thank you for all of your kindness and concern.

**Michelle and Martin Lubetsky:** In memory of Ruth Sevel.

**Fran and Reuben Biel:** We want to give back to the community that made us feel welcomed and to continue the good work that you do at the shul.

**Dr. Sidney Schwimer:** Thank you for your spiritual support through morning minyan and your invaluable help with my wife's memorial stone and unveiling.

**Jonathan and Lauren Schachter:** Thank you for your kind words at the unveiling of Andrea's headstone.

**Larry and Shelli Glanz:** Thank you for officiating at my father's funeral and all of your assistance during this difficult time.

**Martin and Janice Graff:** Thank you for your exceptional efforts during our time of mourning.

**Ellen and Marc Erenstein:** In memory of David Graff.

**Joanne and Jonathan Haskel:** In memory of David Graff

**Morris Naimark:** In appreciation of the wonderful work that you do.

**Barbara and Michael Schneider:** Thank you for your guidance and support during the loss of our Aunt Paula and Uncle Max Smolar.

**Aviva and Noah Lubowsky:** Thank you for preparing and leading a personal and meaningful ceremony for Hannah's Brit Bat.

**Cookie Elbling:** Thank you for your kind visit while I was in the hospital.

**Debby and Nate Firestone:** In appreciation for officiating at my mother, Ruth Sevel's funeral.

**Rochelle and Bruce Parker:** Thank you for all that you did to make Pam and Andy's wedding so memorable and meaningful.

**Karen Shapiro, Paul Shapiro, Janet Stoller and Steve Stoller:** Thank you for always being there for us with your constant support.

**The Katz and Loffman Families:** Thank you for officiating so beautifully at Shirley Katz's funeral.

**Tara Sherman:** Thank you for your wisdom, help and support.

**Ed and Susie Balis:** Wishing a speedy recovery to Milt Eisner.

**Harold and Connie Smolar:** In gratitude of all of your kindness.

**Iris and Eddie Smith:** Thank you to Congregation Beth Shalom for the Aliyah on Rosh Hashanah.

**Neil Smolar:** In appreciation for all of your assistance and kindness.

**The Milton and Sarita Eisner Philanthropic Fund of the Jewish Federation of Greater Pittsburgh:** Thank you for your concern, calls and visits during Mitl's recent illness. L'Shana Tova

**Rick and Shari Sweet:** In honor of Asher Avraham



## SIMCHAS ☆ REMEMBRANCES CONGRATULATIONS

Werbow's Brit

**Neila and Danny Bendas and Family:** In honor of the birth of the son of Rabbi and Melissa Werbow

**Shirley Barasch:** In honor of the birth of Baby Boy Werbow

**Robert I Glimcher Family:** Mazal Tov to Rabbi and Melissa Werbow and their newborn son

**Rachel Orenstein:** Thank you for officiating when Brian and I were married

**Nancy and Leon Zionts:** Mazel Tov on the birth of Asher Avraham Werbow

**Tammie and Steve Moritz:** Thank you for all of your help with Adam becoming a Bar Mitzvah

**Dr. Ralph and Dolores Roskies:** In honor of the birth of Asher Avraham Werbow

**Ralph Schugars Chapel Personnel:** In honor of the birth of Asher Avraham Werbow

**Dr. Jerome and Zippora Harris:** in honor of the birth of Asher Avraham Werbow

**Claire and Morrie Weinbaum:** In honor of the birth of Asher Avraham Werbow

**Rhonda and Mark Horvitz:** In honor of the birth of Asher Avraham Werbow

**Gail Neft and Richard Callet:** In honor of the birth of Asher Avraham Werbow

**Family of Grigory Vaysleyb:** In appreciation of you officiating at Grigory's funeral.

**Bob and Clarice Katz:** Thank you for all of your kind words and prayers.

**Elaine and Carl Krasik:** In honor of the birth of Rabbi and Melissa Werbow's new son

**Helen Eaton and family:** In appreciation of your guidance and support during this difficult period in our lives.

**Mike and Ellen Siegel:** Thank you for making Rachel and Brian's aufruf and wedding ceremony so warm and meaningful.

**Sissie and Jerry Margolis:** In honor of the birth of Rabbi and Melissa Werbow's son

**Sandy Hirsch:** In honor of the birth of Asher Werbow.

**Rhoda and Richard Judd:** In honor of the birth of Asher Avraham Werbow

**Fred and Barbara Gilman:** In honor of the birth of Asher Avraham Werbow

**Lisa Schlar and Alan Finkelstein:** In honor of the birth of

Asher Avraham Werbow.

**Harriet Kruman:** In memory of my dear sister-in-law of over 70 years and in celebration of my 85<sup>th</sup> birthday.

### RABBI WERBOW DISCRETIONARY FUND cont'd

**Sheila Schreiber and Zelda Schreiber:** In appreciation of you officiating at the funeral of our beloved father and husband, Morton Schreiber.

**Carol Lederer:** In honor of the birth of Asher Avraham

**Shirley Weinsweig and Family:** Mazel tov to you and your family on the birth of your beautiful son, Asher Avraham. May you and your family know only good health, happiness and joy

**Dina and Sergey Rayzberg:** Mazel tov on the birth of your son, Asher Avraham

**Beth and Mark Frisch:** In honor of the birth of Asher Avraham

**Sylvia and Norman Elias:** In honor of the new addition to the Werbow family: Asher Werbow

**Suzanne Wagner:** Thank you for your warm and comforting words at our time of grief.

**Yvonne and Barry Stein:** In honor of the birth of Asher Werbow

**Suzanne and Martin Fenster:** Thank you so very much

**Devra Davis and Richard Morgenstern:** In celebration of a joyous Family Chanukah where we appreciate the fact that the best things in life are not things.

**The family of the late Evelyn Benkovitz:** In appreciation of you officiating at the funeral of our beloved mother, grandmother, sister and aunt, Evelyn Benkovitz.

**Sylvia Reznick and Family:** Thank you for the beautiful ceremony you performed at my husband's funeral.

**Mitzi and Merle Levine:** In appreciation of your good work.

**Natalie and Lonnie Wolf and Barbara Braunstein:** In appreciation of you officiating at our mother's funeral and shiva visits

**Debbie Benkovitz:** In appreciation of the time and your kindness as my family and I began the process of grieving and planning Joe's funeral.

**Helen and Alex Kiderman:** In honor of Asher Werbow.

**Marina and Boris Yurovsky:** In honor of the work you do for our Congregation and community.

# BethShalom

Remember them with Respect,  
Love, and Dignity

Allow us to help ease uncertainty, and to give your loved ones a sense of peace by planning ahead.

*Serving the Pittsburgh Jewish Community  
for over 85 years*

Lonnie Wolf  
Cemetery Director  
412.421.2288 x 193  
412.654.7550

# January 2013/ Tevet-Sh'vat 5773

Sun	Mon	Tue	Wed	Thu	Fri	Sat
		<b>1</b> 19 Tevet Preschool Closed Office Closed Religious School Closed	<b>2</b> 20 Tevet Preschool Resumes	<b>3</b> 21 Tevet USY Open Lounge	<b>4</b> 22 Tevet 4:49 p.m. Candle Lighting 4:50 p.m. Kabbalat Shabbat Service	<b>5</b> 23 Tevet <b>Shemot</b>
<b>6</b> 24 Tevet	<b>7</b> 25 Tevet Torah Study with Rabbi Werbow	<b>8</b> 26 Tevet Executive Committee Meeting Kadima Open Lounge	<b>9</b> 27 Tevet	<b>10</b> 28 Tevet USY Open Lounge	<b>11</b> 29 Tevet 4:56 p.m. Candle Lighting 4:55 p.m. Kabbalat Shabbat Service <b>6:00 p.m. Shabbat Alive</b>	<b>12</b> 1 Sh'vat <b>Vaera</b> Rosh Chodesh Sh'vat
<b>13</b> 2 Sh'vat	<b>14</b> 3 Sh'vat Torah Study with Rabbi Werbow	<b>15</b> 4 Sh'vat Board of Trustees Meeting	<b>16</b> 5 Sh'vat	<b>17</b> 6 Sh'vat USY Open Lounge	<b>18</b> 7 Sh'vat Kadima Kinnus/Nachshon 5:03 p.m. Candle Lighting 5:05 p.m. Kabbalat Shabbat Service	<b>19</b> 8 Sh'vat <b>Bo</b> Kadima Kinnus/Nachshon B/M Sophie Geskin (mincha)
<b>20</b> 9 Sh'vat Kadima Kinnus/Nachshon	<b>21</b> 10 Sh'vat <b>Martin Luther King, Jr.</b> <b>Birthday Observed</b>	<b>22</b> 11 Sh'vat Kadima Open Lounge	<b>23</b> 12 Sh'vat	<b>24</b> 13 Sh'vat USY Open Lounge	<b>25</b> 14 Sh'vat USY Tu Bishvat Seder 5:11 p.m. Candle Lighting 5:10 p.m. Kabbalat Shabbat Service <b>5:45 p.m. Shababababa &amp; J-JEP Dinner &amp; Services</b>	<b>26</b> 15 Sh'vat <b>Beshalach</b> Tu Bishvat Chaverim Event
<b>27</b> 16 Sh'vat Atid Event	<b>28</b> 17 Sh'vat Torah Study with Rabbi Werbow	<b>29</b> 18 Sh'vat	<b>30</b> 19 Sh'vat	<b>31</b> 20 Sh'vat USY Open Lounge		

# February 2013/ Sh'vat-Adar 5773

Sun	Mon	Tue	Wed	Thu	Fri	Sat
					<b>1</b> 21 Sh'vat 5:20 p.m. Candle Lighting 5:20 p.m. Kabbalat Shabbat Service	<b>2</b> 22 Sh'vat <b>Yitro</b> B/M Rachel Holzer
<b>3</b> Sh'vat 23 World Wide Wrap Sisterhood Open Meeting Sisterhood Chili Sale Pickup <i>Super Bowl Sunday</i>	<b>4</b> 24 Sh'vat Torah Study with Rabbi Werbow	<b>5</b> 25 Sh'vat Kadima Open Lounge	<b>6</b> 26 Sh'vat	<b>7</b> 27 Sh'vat USY Open Lounge	<b>8</b> 28 Sh'vat USY Shul-In 5:28 p.m. Candle Lighting 5:30 p.m. Kabbalat Shabbat Service <b>6:00 p.m. Shabbat Alive</b>	<b>9</b> 29 Sh'vat <b>Mishpatim</b> <b>Shabbat Shekalim</b>
<b>10</b> 30 Sh'vat <b>Daylight Savings Time Begins</b> Rosh Chodesh Adar Men's Club Sports Luncheon	<b>11</b> 1 Adar Rosh Chodesh Adar Torah Study with Rabbi Werbow	<b>12</b> 2 Adar Executive Committee Meeting	<b>13</b> Adar 3	<b>14</b> 4 Adar USY Open Lounge	<b>15</b> 5 Adar 5:37 p.m. Candle Lighting 5:35 p.m. Kabbalat Shabbat Service	<b>16</b> 6 Adar <b>Terumah</b> B/M Sammy Himmel (Mincha)
<b>17</b> 7 Adar	<b>18</b> 8 Adar <b>President's Day</b> Preschool Closed	<b>19</b> 9 Adar Board of Trustees Meeting Kadima Open Lounge	<b>20</b> 10 Adar	<b>21</b> 11 Adar Fast of Esther USY Open Lounge	<b>22</b> 12 Adar 5:45 p.m. Candle Lighting 5:45 p.m. Kabbalat Shabbat Service	<b>23</b> 13 Adar <b>Tetzaveh</b> <b>Shabbat Zachor</b> Megillah Reading (Evening)
<b>24</b> 14 Adar <b>Purim</b> Megillah Reading Purim Carnivail	<b>25</b> 15 Adar Torah Study with Rabbi Werbow Shushan Purim Preschool Closes at 3:00: Family Purim Celebration	<b>26</b> 16 Adar	<b>27</b> 17 Adar	<b>28</b> 18 Adar USY Specialty Kinrus No USY Open Lounge		



Non-Profit  
Organization  
**PAID**  
U.S. Postage  
Pittsburgh, PA  
Permit No. 2086

Congregation Beth Shalom  
5915 Beacon Street  
Pittsburgh, PA 15217

*Mishpachtenu* is published bi-monthly by  
Congregation Beth Shalom  
**[www.bethshalompgh.org](http://www.bethshalompgh.org)**